

## DISTRIBUTION TRANSFORMERS

### 11 000/240 Volt Single Phase



#### Approximate Dimensions:

Length: 700mm

Height: 700mm

#### Example of the Rating Plate:

ACTOM			
LVD DISTRIBUTION TRANSFORMERS			
KVA	250	VOLTS HV/LV	23000 415
PHASE	3	AMPERES	0.25 978
IMPEDANCE	400	WINDINGS HV/LV	AL AL
FREQUENCY	50 HZ	COOLING	UN/AN
SERIAL NO.	1000100	YEAR & MONTH OF MANUF.	2018/05
ORDER NO.	1115997	CORE & WINDING	450
CUSTOMER	ACTOM ELEC PRODUCTS	TOTAL MASS	145
SAP No.		CR.	247

MANUFACTURED IN ACCORDANCE WITH  
FACOM SPECIFICATION SA.346 87/0.6

OIL CONTAINS NO TRACE OF PCB'S

VENTILATE TANK INTERIOR  
BEFORE REMOVING WELDING  
COVER

TO REF P11 LFD (INDICATE PH 1, VACUUM  
TERMINAL MARKINGS)

H.V.	SWITCH POSITION
106	1
103	2
100	3
97	4
94	5

VECTOR SYMBOL  
Dyn 11

SANS 780 27033

#### Typical Data:

- Transformer For Industrial Applications:** Manufactured **SANS IEC 613781** and Tested **standard** The Design **Will ensure that the unit will withstand the typically high electrical stresses**
- The Large Robust Radiators** **Quickly dissipate any heat created by extra losses that are normally caused by "Eddy" currents**
- Short Circuit Tested to** **SANS 780-IEC 60076-5 and Eskom specific 34-346**
- Customise with Accessories** **Please contact us for a full list of accessories**

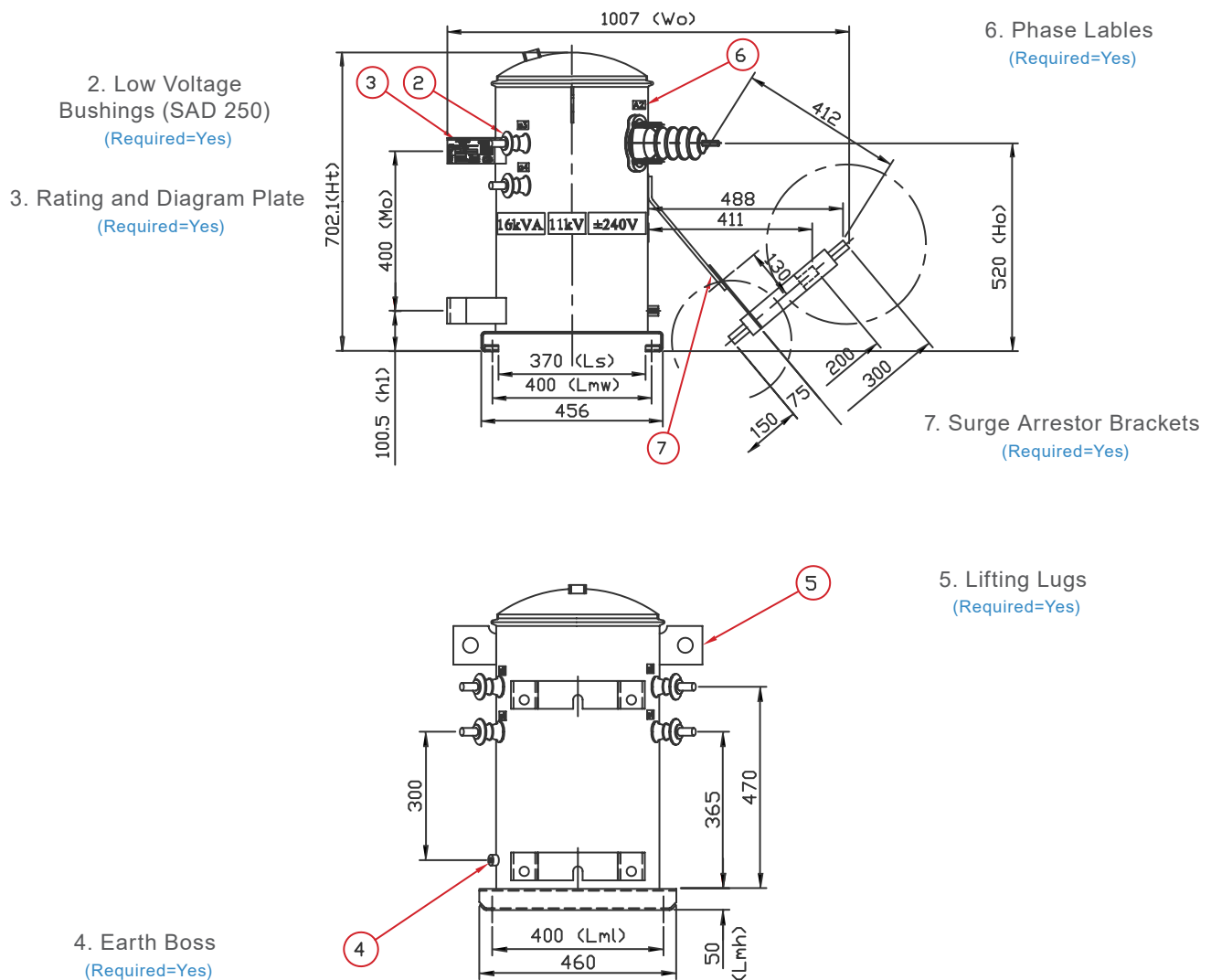
#### Product Data:

- Rating** 16-25 KVA
- Voltage** 11 000 - 240 V
- Impedance** 4.5 %
- Number of Phases** Single Phase

## DISTRIBUTION TRANSFORMERS

### 11 000/240 Volt Single Phase

#### General Third Angle Projection (Scale 1:10)



#### Additional Information:

Oil Litres	48	LT
Core & Wind Mass	79	KG
Total Mass	158	KG

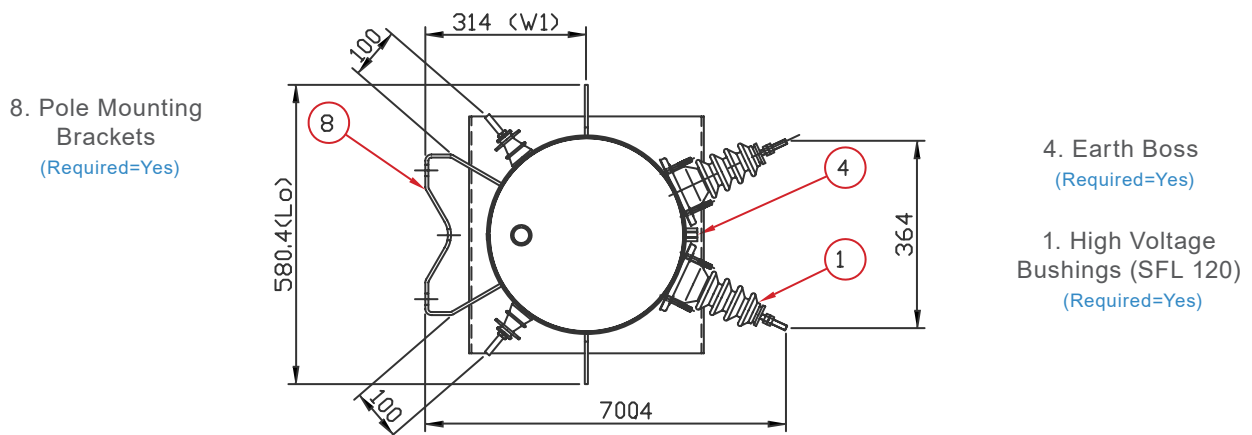
1. 8mm Thick Pole Mounting Brackets
2. Threaded Rods, Nuts, Spring Washers and Flat Washers supplied
3. LV Bushing Stem is M12
4. Lifting Lug Holes  $\phi$  35mm
5. Voltage Stated Below is the Off-Load Voltage
6. LV Tappings: 0%, +3%, +6%

Address: 4 Branch Road, Germiston 1401, P.O. Box 678, Germiston 1400

## DISTRIBUTION TRANSFORMERS

### 11 000/240 Volt Single Phase

#### General Third Angle Projection (Scale 1:10)



### Product Information:

Rated Power	No Loss Watts	Full Load Loss Watts	Impedance (%)	Length (mm)	Width (mm)	Height (mm)	Oil Volume (Litres)	Total Mass (kg)
16 (kVA)	80	400	4.5	700	580	700	48	155
25	110	530	4.5	765	632	764	56	176

## Complete your Project:

Please select the items you require and we will be in touch

### Cables and Wires:

Indoor  
Outdoor  
General  
Other  
Let an ACTOM  
Specialist Contact you

### Lighting:

Indoor  
Outdoor  
General  
Other  
Let an ACTOM  
Specialist Contact you

### Transformers (Distribution):

Indoor  
Outdoor  
General  
Other  
Let an ACTOM  
Specialist Contact you

### Accessories:

Indoor  
Outdoor  
General  
Other  
Let an ACTOM  
Specialist Contact you

### Specific Information:

Address: 4 Branch Road, Germiston 1401, P.O. Box 678, Germiston 1400

## For more Information on this Product Please Send us the Following

### Product Information:

Product Name:

Quantity:

Project Name:

Date the Product is required:

### Your Contact Information:

Name and Surname:

Company:

Email:

Phone Number:

Province:

## Thank You

### For having a Look at this Product

Please send this PDF back to us with all your Information

Scan the QR Code to visit our Website:

